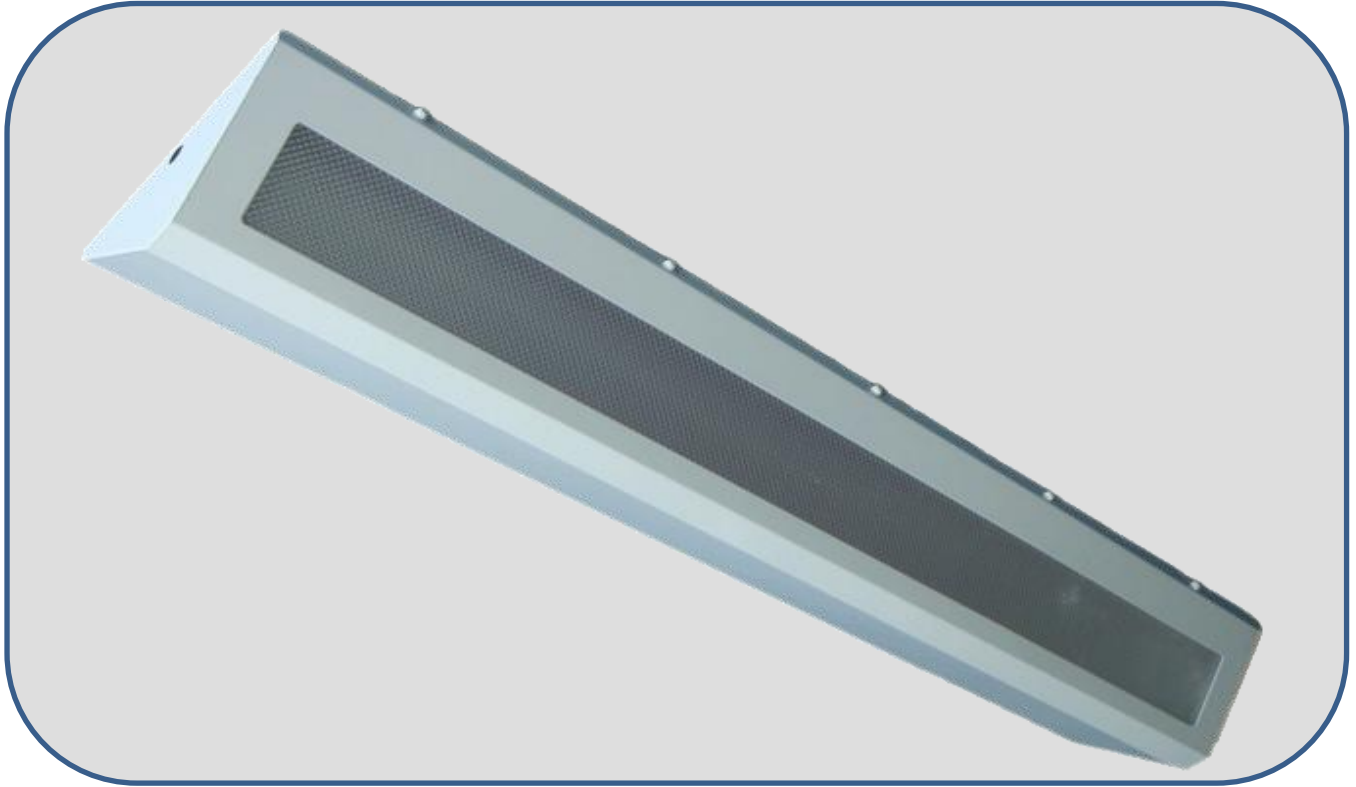


Triangle Shaped Fluorescent Fittings

This triangle shaped elegant surface mounted luminaire is designed for use in interiors and administrative office where a high degree of downward lighting is required with minimum glare.



Model : KM 240

Technical Data

Construction	: In heavy gauge steel sheet and fully pre-treated.	
Paintwork	: High grade white polyester powder coated high reflectance finish.	
Diffuser	: M12 Acrylic diffuser.	
IP Protection	: IP 20	
Mechanical Mounting	: Surface mounted.	
Dimension	: KM240 2 x 36W = 340mmW x 1,275mmL x 142mmHt. : KM440 4 x 36W = 340mmW x 1,275mmL x 142mmHt.	
Lamp Source	: Fluorescent lamp 36W (240V 50Hz)	
Lamp Colour Temperature	: 2,700K / 3,000K / 4,000K or 6,500K	
Ballast	: 6W extra low loss.	
Optional Components	: Opal.	(O)
	: High frequency electronic ballast.	(EB)
	: EL emergency power pack.	(EL)
	: 2 amp Fused terminal block.	(FTB)
	: Radio interference suppressors.	(RIS)
Applications	: Multi purpose Hall	

Ordering Code

Example : KM240

Fittings can be supplied in other dimensions if required. All specification and designs shown in this catalogue are subject to change w/o prior notice.