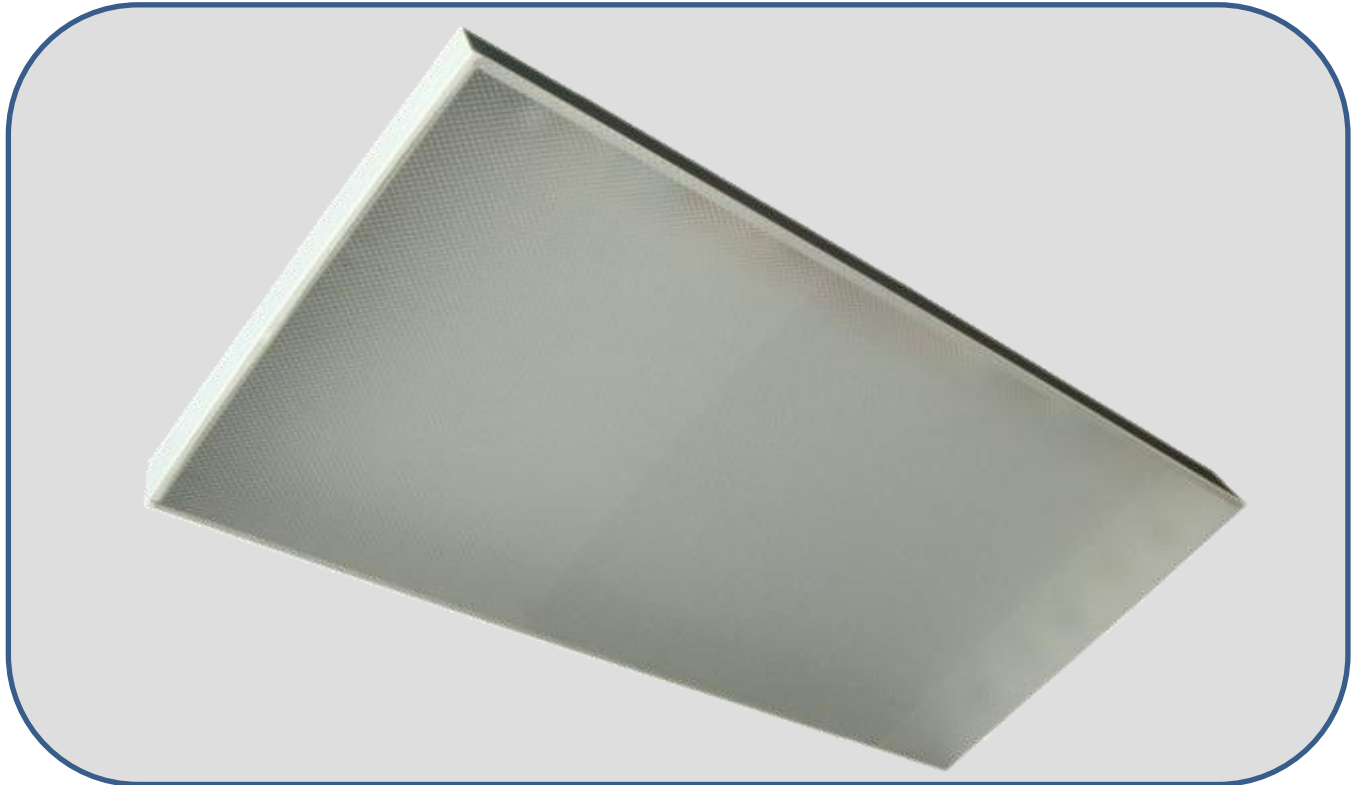


Surface Mounted Fluorescent Fittings

This elegant surface mounted luminaire is designed for use in interiors and administrative offices where a high degree of downward lighting is required with minimum glare.



Model : KM 240 (2' x 4')

Technical Data

Construction	: In heavy gauge steel sheet and fully pre-treated.	
Diffuser	: M12 Acrylic diffuser.	
Paintwork	: High grade white polyester powder coated high reflectance finish.	
IP Protection	: IP 20	
Mechanical Mounting	: Surface mounted.	
Dimension	: KM240 2 x 36W = 305mmW x 1,223mmL x 83mmHt. : KM240 2 x 36W = 610mmW x 1,223mmL x 83mmHt. : KM340 3 x 36W = 610mmW x 1,223mmL x 83mmHt. : KM440 4 x 36W = 610mmW x 1,223mmL x 83mmHt.	
Lamp Source	: Fluorescent lamp 36W (240V 50Hz)	
Lamp Colour Temperature	: 2,700K / 3,000K / 4,000K or 6,500K	
Ballast	: 6W extra low loss ballast.	
Optional Components	: Opal. (O) : Parabol louvre. (P L) : High frequency electronic ballast. (EB) : EL emergency power pack. (EL) : 2 amp Fused terminal block. (FTB) : Radio interference suppressors. (RIS)	
Applications	: Offices, Libraries and Department stores.	

Ordering Code

Example : KM240 / 2' X 4' / EL / FTB / RIS

Fittings can be supplied in other dimensions if required. All specification and designs shown in this catalogue are subject to change w/o prior notice.

Manufacturer : Kohsun (M) Sdn.Bhd. (128027-W) No. 11, Jalan BK1/11, Kinrara Industrial Park, Bandar Kinrara, 47180 Puchong, Selangor D.E, Malaysia. Tel : 603-80751662 (H/L) Fax : 603-80753006 Email : kslite@kohsun.com