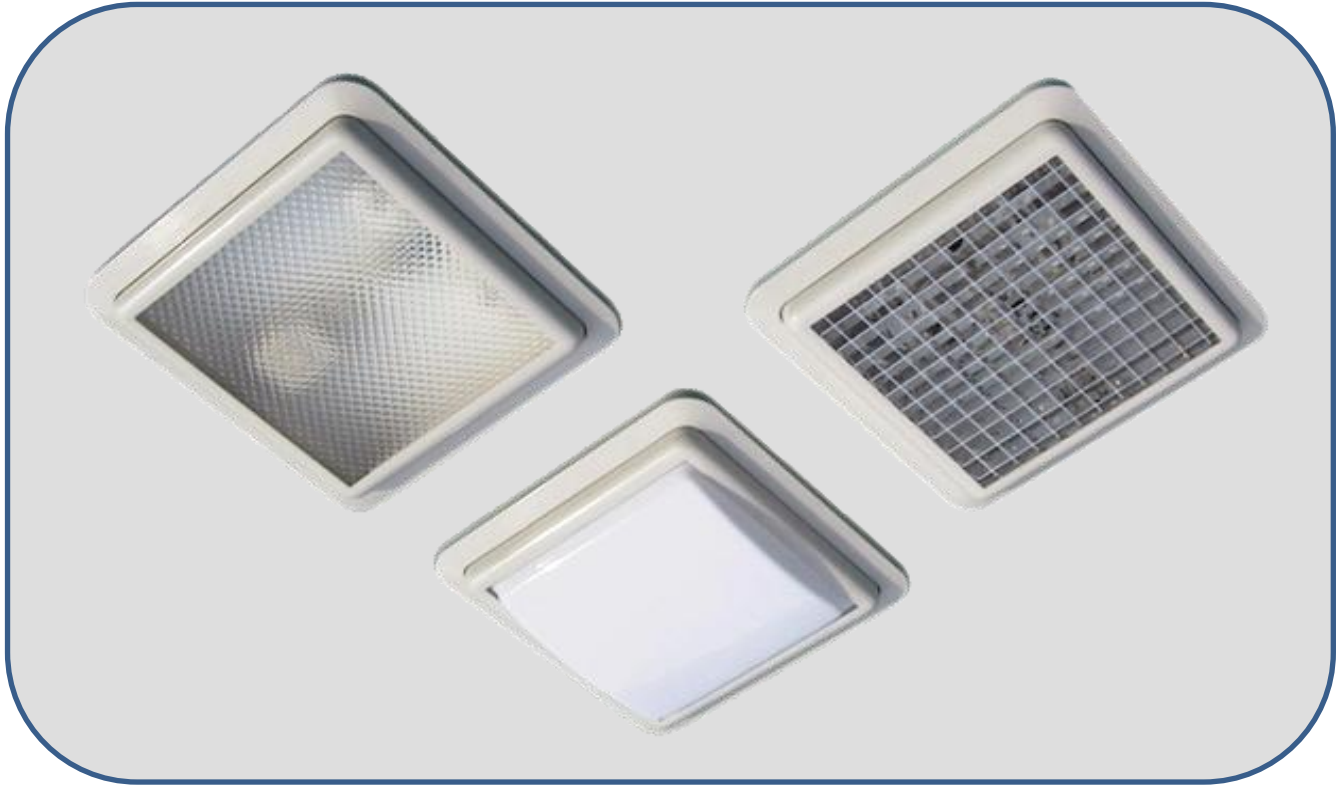


Energy Saving System Fluorescent Fittings

Surface mounted or semi-recessed downlight of low installed depth with 2 x PL9W or 2 x PLCE18W compact fluorescent lamp.



Model : KES800

Technical Data

Construction	: Body formed from injection moulded high impact resistance plastic materials with metal base plate.			
Color	: White.			
IP Protection	: IP 20			
Mechanical Mounting	: Recessed or surface mounted.			
Dimension	: KES800 / P / PL			
	: KES800 / M12 / PL			
	: KES800 / O / PL	Width	Length	Height
	: KES800 / P / PLCE	240mm	240mm	55mm
	: KES800 / M12 / PLCE			
Lamp Source	: 2 x PL9W or 2 x PLCE18W			
	: 2,700K / 3,000K / 4,000K or 6,500K			
Ballast	: 6W extra low loss ballast.			
Diffuser	: Parabol louvre.	(PL)		
	: M12 Acrylic.	(M12)		
	: Opal moulded.	(O)		
Applications	: Corridor, Car porch, Toilet and Staircase.			

Ordering Code

Example : KES/800/P/PL

Fittings can be supplied in other dimensions if required. All specification and designs shown in this catalogue are subject to change w/o prior notice.