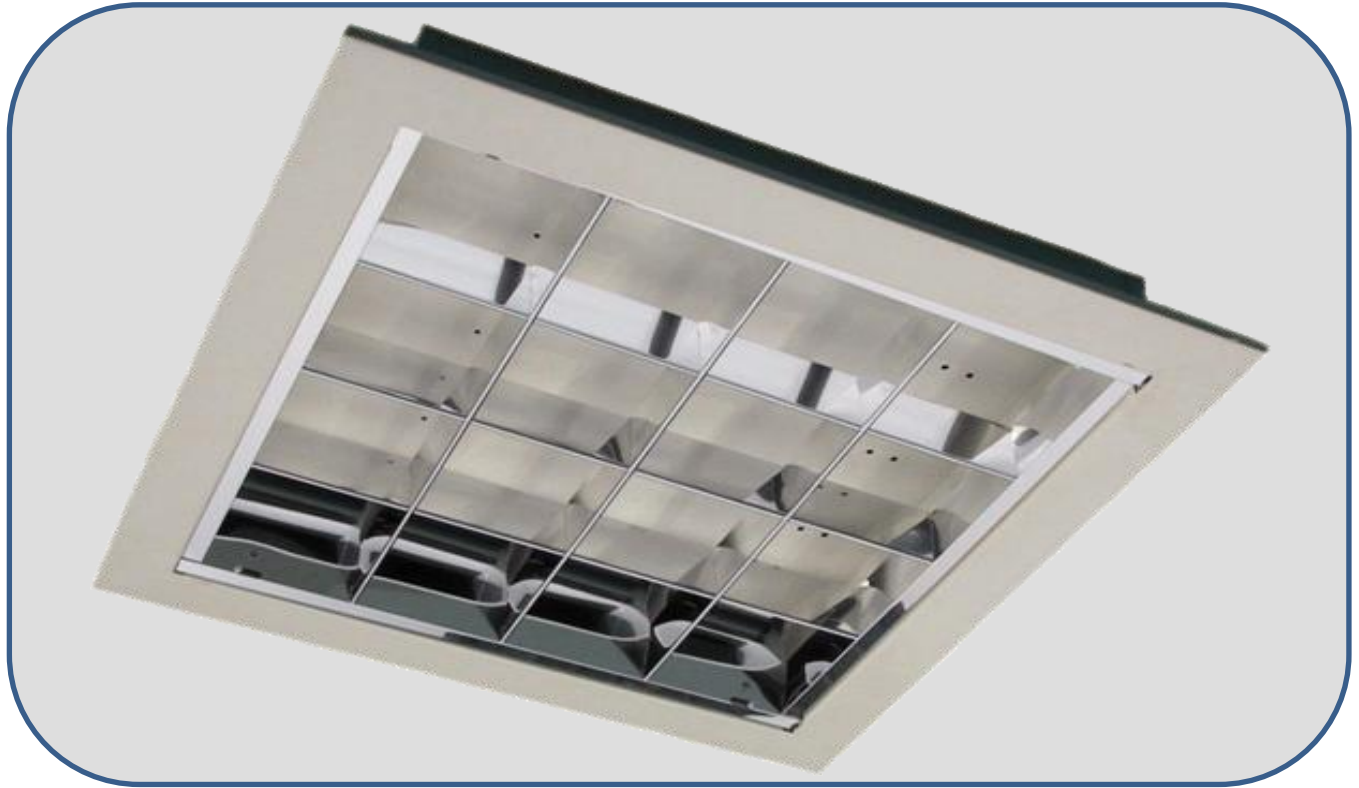


PLL36W VDU Parabolic Louvre Fluorescent Fittings

This recessed luminaire is fitted with PLL36W lamp in combination with the VDU parabolic louvre provides optimum lighting performance.



Model : KSC/AR 340 PLL 16 cells

Technical Data

Construction	: In heavy gauge steel sheet and fully pre-treated.
Louvre	: High quality, chemically brightened and anodized in semi-gloss or gloss finish. Parabolic shaped vanes ensure high efficiency optimal light output with wide batwing distribution, good uniformity and low glare.
Paintwork	: High grade white polyester powder coated high reflectance finish.
IP Protection	: IP 20
Mechanical Mounting	: T - Bar suspended ceiling. (Recessed Type)
Hole Opening Dimension	: 595mm W x 595mm L (Metric) or 603mm W x 603mm L (Imperial)
Expose Frame Dimension	: 595mm W (Metric) or 603mm W (Imperial) x 613mm L x 95mm Ht.
Lamp Source	: Fluorescent lamp PLL36W (240V 50Hz)
Lamp Colour Temperature	: 2,700K / 3,000K / 4,000K or 6,500K
Ballast	: 6W extra low loss ballast.
Optional Components	: High frequency electronic ballast. (EB) : Top mirror. (TM) : EL emergency power pack. (EL) : 2 amp Fused terminal block. (FTB) : Radio interference suppressors. (RIS)
Applications	: Computer rooms, Airports, Hospitals, Reception areas, Libraries and Department stores.

Ordering Code

Example : KSC/AR340 PLL / SF / TM / EL / FTB / RIS

Fittings can be supplied in other dimensions if required. All specification and designs shown in this catalogue are subject to change w/o prior notice.

Manufacturer : Kohsun (M) Sdn.Bhd. (128027-W) No. 11, Jalan BK1/11, Kinrara Industrial Park, Bandar Kinrara, 47180 Puchong, Selangor D.E, Malaysia. Tel : 603-80751662 (H/L) Fax : 603-80753006 Email : kslite@kohsun.com