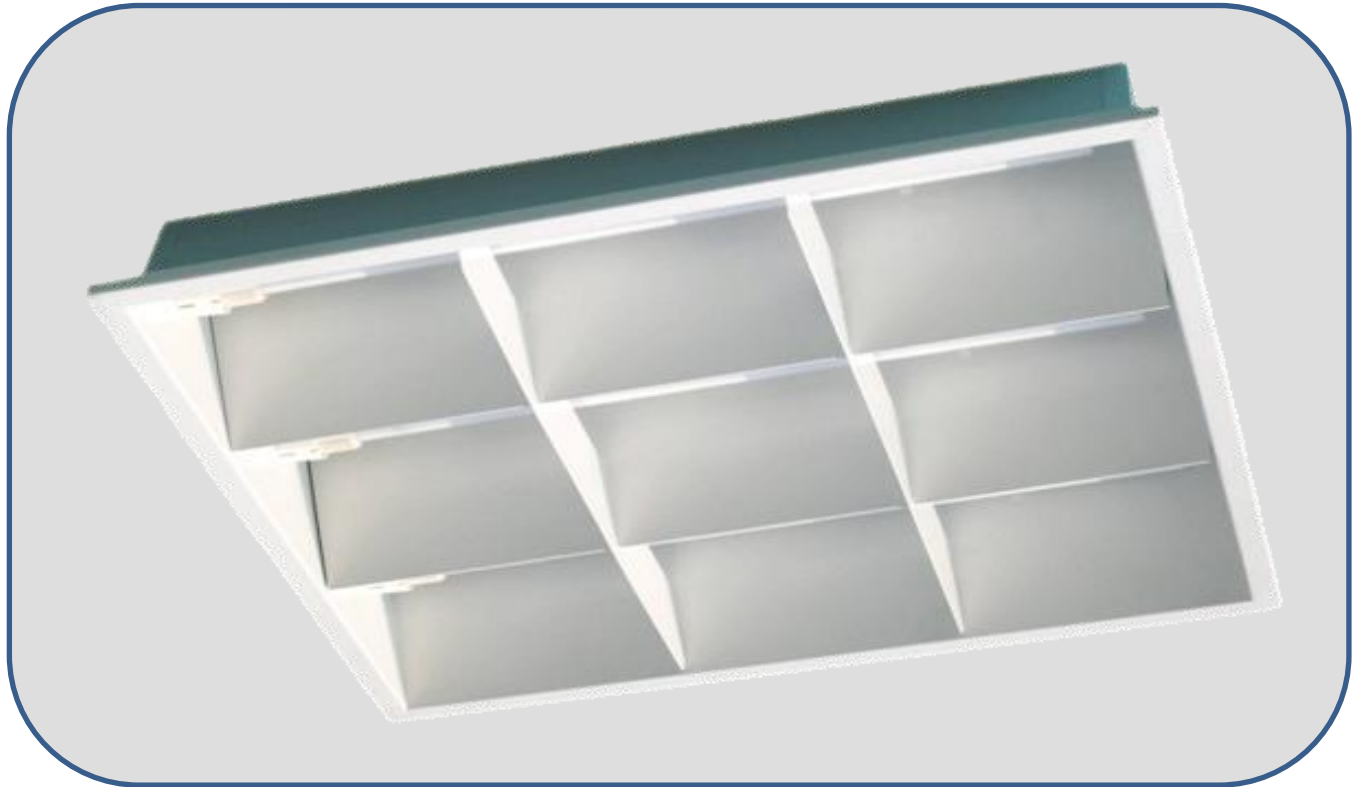


## PLL36W White Lamellas Fluorescent Fittings

This modular recessed luminaire is fitted with PLL36W lamp in combination with the faceted white side reflector and flat cross lamellas, both in white finished aluminium, features a functional design and an economic price. It offers a good screening of the lamp(s) in all directions and the open structure ensures a high light output ratio.



**Model : KMR/AR 340 PLL white 9 cells**

### Technical Data

Construction	: In heavy gauge steel sheet and fully pre-treated.	
Louvre	: Facetted white side reflector and flat cross lamellas.	
Paintwork	: High grade white polyester powder coated high reflectance finish.	
IP Protection	: IP 20	
Mechanical Mounting	: Wood ceiling or plaster ceiling.	
Hole Opening Dimension	: 446mm W x 446mm L	
Expose Frame Dimension	: 466mm W x 466mm L x 85mm Ht.	
Lamp Source	: Fluorescent lamp PLL36W ( 240V 50Hz )	
Lamp Colour Temperature	: 2,700K / 3,000K / 4,000K or 6,500K	
Ballast	: 6W extra low loss ballast.	
Optional Components	: High frequency electronic ballast.	( EB )
	: Top mirror.	( TM )
	: EL emergency power pack.	( EL )
	: 2 amp Fused terminal block.	( FTB )
	: Radio interference suppressors.	( RIS )
Applications	: Computer rooms, Airports, Hospitals, Reception areas, Libraries and Department stores.	

### Ordering Code

**Example : KMR/AR340 PLL**

Fittings can be supplied in other dimensions if required. All specification and designs shown in this catalogue are subject to change w/o prior notice.

Manufacturer : Kohsun ( M ) Sdn.Bhd. ( 128027-W ) No. 11, Jalan BK1/11, Kinrara Industrial Park, Bandar Kinrara, 47180 Puchong, Selangor D.E, Malaysia. Tel : 603-80751662 ( H/L ) Fax : 603-80753006 Email : kslite@kohsun.com

Rev. A