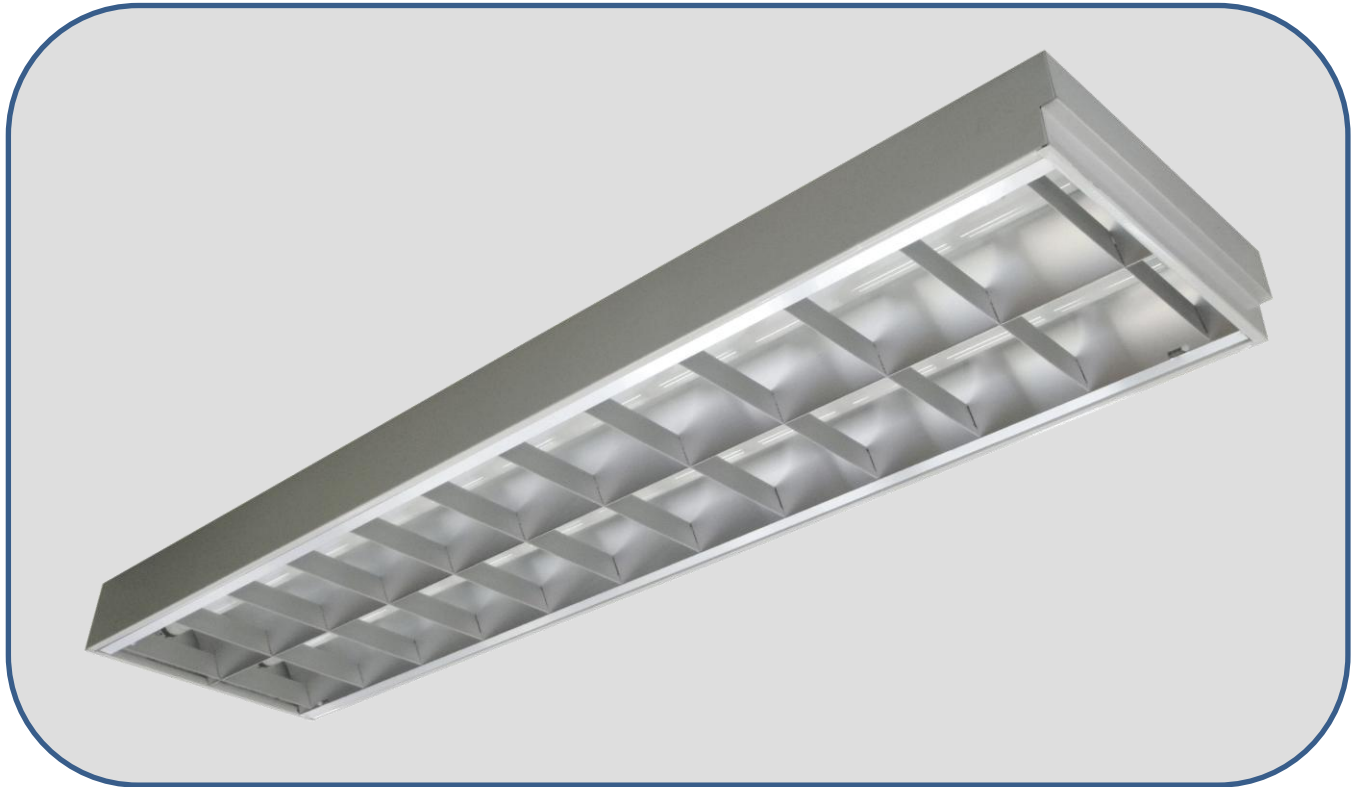


## Recessed Parabolic Louvre Fluorescent Fittings

This is a high efficiency recessed luminaire. The high efficiency parabolic reflector provides a batwing light distribution and permits extended spacing between luminaires without loss of uniformity. The reflector is hinged to the housing allowing easy maintenance.



**Model : KSC/AR 240 1' x 4'**

### Technical Data

Construction	: In heavy gauge steel sheet and fully pre-treated.
Louvre	: High quality, chemically brightened and anodized in semi-gloss or gloss finish. Parabolic shaped vanes ensure high efficiency optimal light output with wide batwing distribution, good uniformity and low glare.
Paintwork	: High grade white polyester powder coated high reflectance finish.
IP Protection	: IP 20
Mechanical Mounting	: T - Bar suspended ceiling. ( Recessed Type )
Hole Opening Dimension	: 295mm W x 1,195mm L ( Metric ) or 298mm W x 1,212mm L ( Imperial )
Expose Frame Dimension	: 295mm W ( Metric ) or 298mm W ( Imperial ) x 1,223mm L x 93mm Ht.
Lamp Source	: Fluorescent lamp 2 x 36W ( 240V 50Hz )
Lamp Colour Temperature	: 2,700K / 3,000K / 4,000K or 6,500K
Ballast	: 6W extra low loss ballast.
Optional Components	: High frequency electronic ballast. ( EB ) : Top mirror. ( TM ) : EL emergency power pack. ( EL ) : 2 amp Fused terminal block. ( FTB ) : Radio interference suppressors. ( RIS )
Applications	: Offices, Department stores, Reception areas, Halls, Showroom and Libraries.

### Ordering Code

**Example : KSC/AR240 / 1' X 4' / TM / EL / FTB / RIS**

Fittings can be supplied in other dimensions if required. All specification and designs shown in this catalogue are subject to change w/o prior notice.

Manufacturer : Kohsun ( M ) Sdn.Bhd. ( 128027-W ) No. 11, Jalan BK1/11, Kinrara Industrial Park, Bandar Kinrara, 47180 Puchong, Selangor D.E, Malaysia. Tel : 603-80751662 ( H/L ) Fax : 603-80753006 Email : kslite@kohsun.com