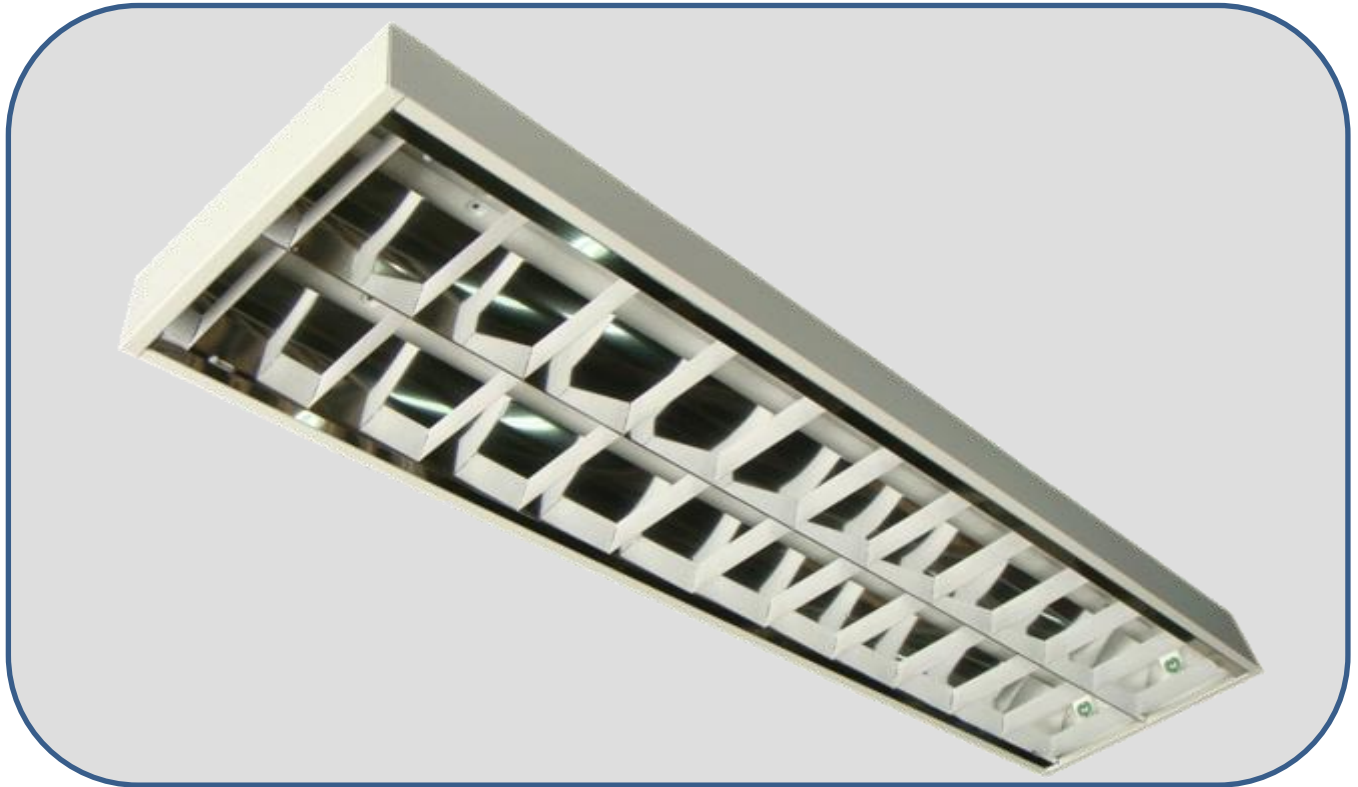


Surface Mounted Parabolic Louvre Fluorescent Fittings

This is a high efficiency surface mounted luminaire. The high efficiency parabolic reflector provides a batwing light distribution and permits extended spacing between luminaires without loss of uniformity. The reflector is hinged to the housing allowing easy maintenance.



Model : KM/AR 240 1' x 4'

Technical Data

Construction	: In heavy gauge steel sheet and fully pre-treated.	
Louvre	: High quality, chemically brightened and anodized in semi-gloss or gloss finish. Parabolic shaped vanes ensure high efficiency optimal light output with wide batwing distribution, good uniformity and low glare.	
Paintwork	: High grade white polyester powder coated high reflectance finish.	
IP Protection	: IP 20	
Mechanical Mounting	: Surface mounted	
Dimension	: 305mm W x 1,222mm L x 93mm Ht.	
Lamp Source	: Fluorescent lamp 2 x 36W (240V 50Hz)	
Lamp Colour Temperature	: 2,700K / 3,000K / 4,000K or 6,500K	
Ballast	: 6W extra low loss ballast.	
Optional Components	: High frequency electronic ballast.	(EB)
	: Top mirror.	(TM)
	: EL emergency power pack.	(EL)
	: 2 amp Fused terminal block.	(FTB)
	: Radio interference suppressors.	(RIS)
Applications	: Offices, Department stores, Reception areas, Halls, Showroom and Libraries.	

Ordering Code

Example : KM/AR240 / 1' X 4' / EL / FTB / RIS

Fittings can be supplied in other dimensions if required. All specification and designs shown in this catalogue are subject to change w/o prior notice.

Manufacturer : Kohsun (M) Sdn.Bhd. (128027-W) No. 11, Jalan BK1/11, Kinrara Industrial Park, Bandar Kinrara, 47180 Puchong, Selangor D.E, Malaysia. Tel : 603-80751662 (H/L) Fax : 603-80753006 Email : kslite@kohsun.com